



# SeaScape

‘A Platform for  
your imagination’



# Introduction

SeaScape is a new way to experience the sea.

It is not a floating house but a stationary yacht, with the vision to surprise holidaymakers in their quest for novel experiences.

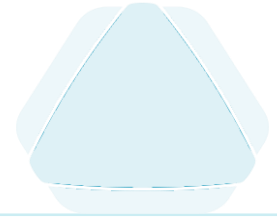
BMT's flexible, modular marine platform has been tailored for coastal environments, allowing bespoke villa architecture to be crafted for each developer's needs.

Styled and engineered for luxury at sea, SeaScape demonstrates a thoughtful design solution that considers challenges and needs at every stage – from concept, to construction, to final product.

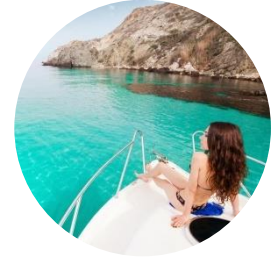
We integrate BMT's skills and marine know-how to transform an original concept into a safe and seaworthy vessel, with your tailor-made villa giving that unique, unforgettable experience and rich memories for your guests.

To experience life living on the sea in absolute luxury, both above and below the water, totally immersed in the everchanging seascape.

SeaScape – *the platform for your imagination.*



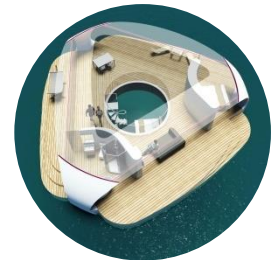
YACHTING INSPIRED  
LUXURY

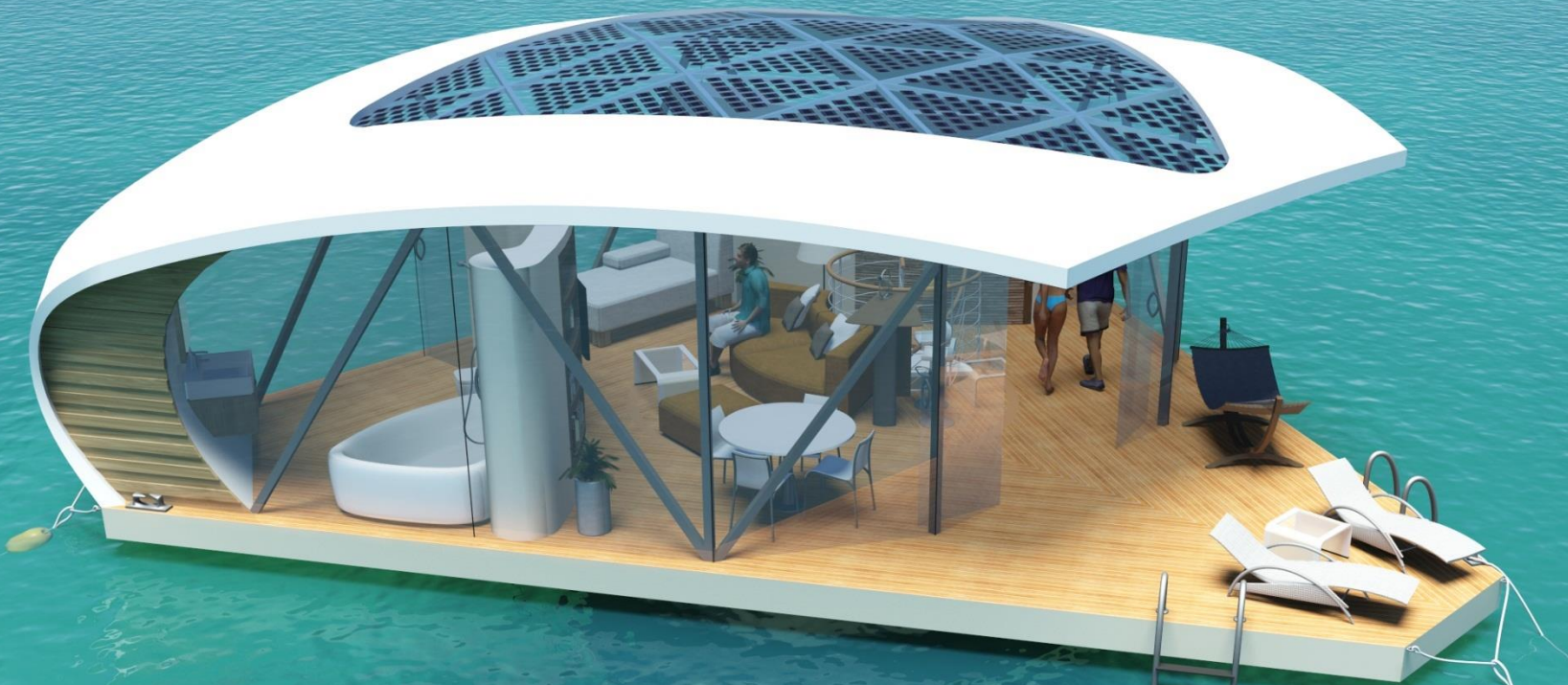


NOVEL,  
UNFORGETTABLE  
EXPERIENCES



STYLED AND  
ENGINEERED FOR  
THE SEA



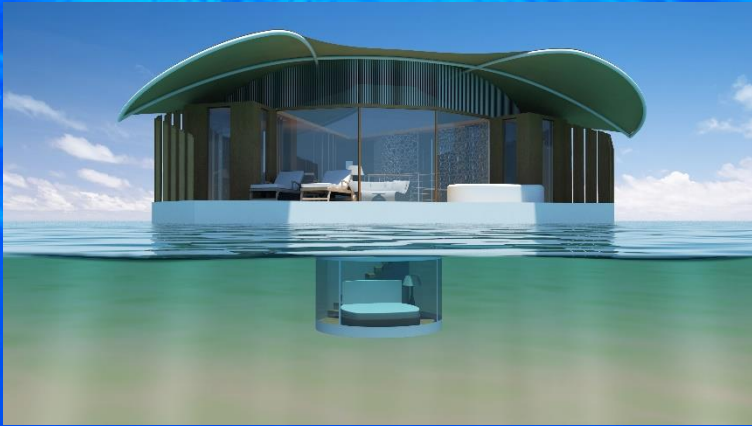


## THE VANTAGE POINT

The SeaScape offers luxury accommodation at Sea, bringing guests to the waters edge where they can privately enjoy 360 degrees of breathtaking beauty, above and below warm, reef-fringed waters.







## UNDER THE SEA

Beneath gentle waves, SeaScape's underwater bedroom featuring panoramic crystal clear walls allows guests to access and view the wonder and mystery of the coral seas.



## FLEXIBLE APPLICATION

From materials to installation, SeaScape is modular by design. This ensure consistency in quality, ease of construction and cost effectiveness of scaling up.

A 'zero discharge' philosophy and an eco-friendly mooring system eliminates impacts on site.







## EFFICIENT TRANSPORT & INSTALLATION

The application of marina style pontoon access in place of individual moorings lends to greater efficiency and simplicity of installation.

For all models transport & logistics are simplified with pre-fabricated parts designed to fit into standard shipping containers.



# Accommodation

## Flexibility to fit your imagination...

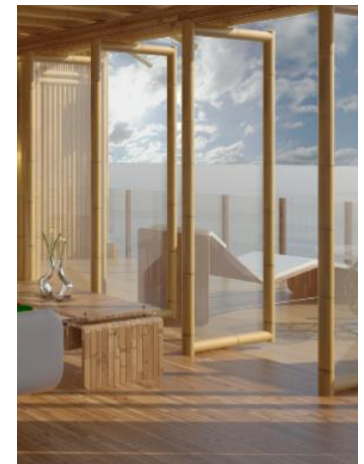
### Accommodation

The previous pages have illustrated the basic SeaScape platform with a variety of villa structures.

Using the base triangular hull (with a platform interface to the accommodation to give freedom in accommodation arrangements) releases our clients to develop villas to suit the style of existing developments, or newly developed architecture.

The options are endless: tropical hideaways, glamping hideouts, marina chalets.....

*SeaScape – the platform for your imagination*



# Site Options & Requirements



## FULLY FREE

- ✓ Independent electricity &
- ✓ Fresh/waste water storage
- ✓ Full mooring system



## LAND CONNECTION

- ✓ shore supplied electricity &
- ✓ Fresh/waste water piped ashore
- ✓ Basic mooring system

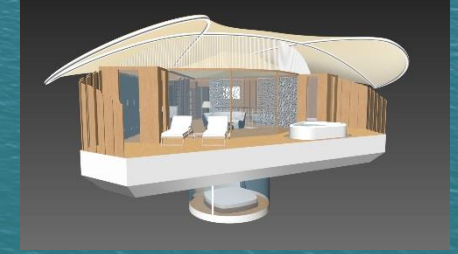
## SHELTERED SITE

- ✓ Independent or shore supplied electricity &
- ✓ Fresh/waste water storage or piped ashore
- ✓ Basic mooring system





# Villa Features



- Modern, futuristic, glamping.....you choose
- Fit-out & Systems .....match your sites' individual requirements
- Furniture, Furnishings & Equipment .....to your specification.



# Hull & Underwater Bedroom

## A Lloyd's Register in-principle approved design

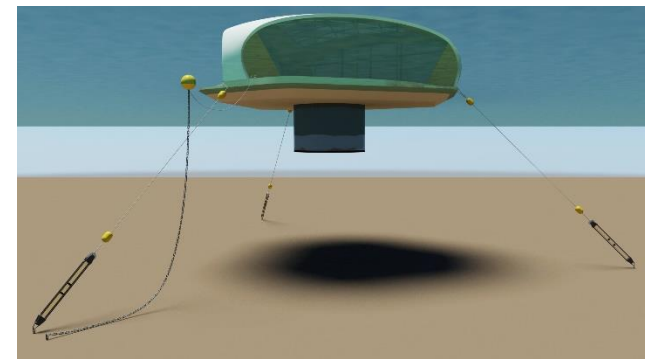
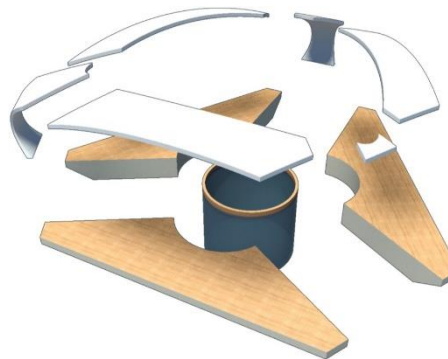
### Hull

BMT's heart is in marine design, and it is in the hull where we have focussed attention – providing developers with an attractive and reliable platform on which their villa concepts can be sited.

The foundations of the villa are fabricated from maintenance free yacht specification Glass Reinforced Plastic (GRP). The pontoons will be developed with separate compartments to provide buoyancy, ballast, or support generator, fresh/greywater services, as required.

Prefabricated assembly will ensure the quality and consistency of the units which will be trial assembled prior to shipping in standard 40' containers.

Recent review by Lloyds Register Classification Society has validated the design integrity – providing developers the assurance of a seaworthy platform.





# Fitout - Systems

## Major, but hidden, systems to provide a 5-star stay

The following internal systems are provided:

### Power

Generator set inside the pontoon. Current yacht generators are compact and super quiet, together with battery packs and optional rooftop solar cells these systems will provide all power needs of the Seascape

### Fresh / Grey / Black water

Either shoreside supply or fresh water storage within the pontoons (7 day capacity) and Grey & Black water storage (7 days capacity). Resupply & pump-out into support vessel; hence a “zero discharge” in whatever configuration is chosen

### Air conditioning & Ventilation

Dependent on the final requirements, this is a major system and will be carefully integrated with vent placement to ensure hot/cold spots are avoided. This will be based on

### Lighting, Internal and Underwater

Underwater LED lighting can be fitted required.

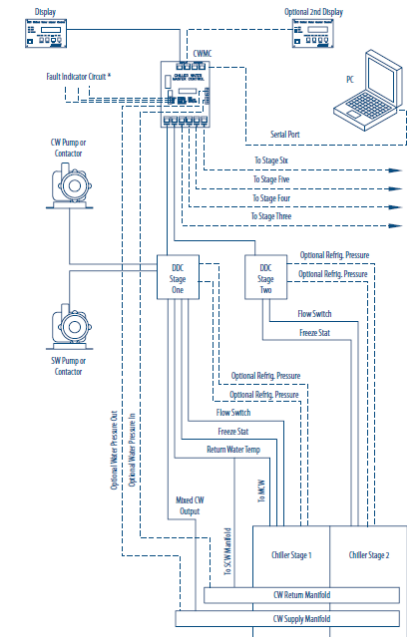
### Fire Detection & Suppression and other essential safety systems fitted as required



Silent, efficient marine power generators.



Zero discharge by waste pump-out



Marine chilled water & air handling systems to ensure on-board comfort.

